



BULGARKONTROLA S.A.

**CARGO & DAMAGE SURVEYS, LABORATORY ANALYSES,
CONFORMITY ASSESSMENT & TECHNICAL INSPECTIONS,
MANAGEMENT SYSTEMS**



Head office: 23, Sitnyakovo Blvd., 1505 Sofia, Bulgaria
Emergency mobile: +359 889 400 400, Tel.: +359 2 989 4070, Fax: +359 2 988 2354
E-mail: sales@bulgarkontrola.bg, cert@bulgarkontrola.bg

CERTIFICATE OF CONFORMITY 14 – НУРВСПРСБ – 2342

Issued pursuant to Art. 14, par.1 and par. 2 of the Regulation № РД-02-20-1 от 05.02.2015 on the conditions and procedures of incorporation of construction products in the construction works of the Republic of Bulgaria on Ministry of Regional Development and Public Works for the **construction product**

WELDABLE REINFORCING STEELS class B 500 C, in bars and in coils

used for the reinforcement of concrete with nominal diameter, mechanical properties and chemical composition, as given in Supplement №1 to this Certificate

**PLACED ON THE MARKET BY
ÇOLAKOĞLU METALURJIA A.Ş.
Rüzgarlibahçe Mah.Kavak Sok. No 16, Kat.5,
Kavacik-Beyko- Istanbul, Turkey**

**MANUFACTURED BY
ÇOLAKOĞLU METALURJIA A.Ş.
Dilovasi Organize Sanayi Bölgesi,, Göksu Cad., 41455
Dilovaci-Kocaeli, Turkey**

This certificate certifies that the product has been evaluated and meets national requirements set out in

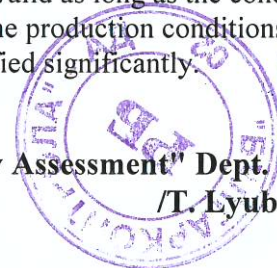
**BDS 9252:2007
BDS EN 10080:2006**

were applied and fulfilled and that the product conforms to all prescribed requirements.

This certificate was first issued on **28.12.2016** r. and remains valid as long as the conditions laid down in the technical specification are fulfilled and the production conditions or the production control are not modified significantly.

**Place: Sofia
Date: 28/12/2016**

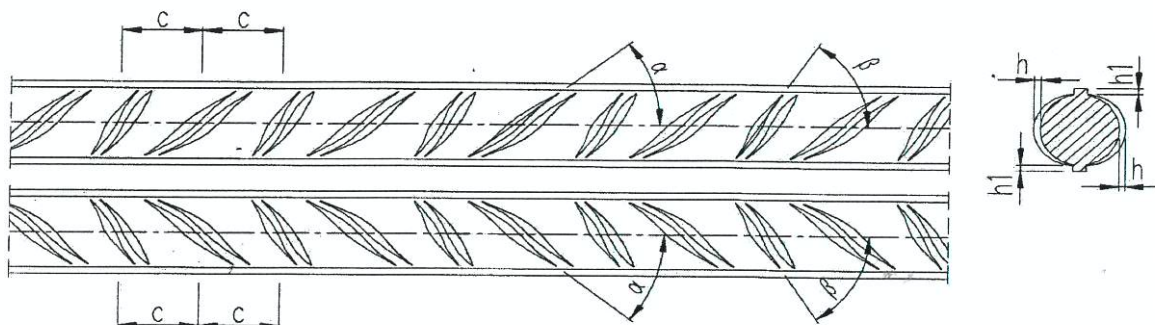
**Director of "Conformity Assessment" Dept.
/T. Lyubenova/**



BULGARKONTROLA S.A.– Sofia with identification number 14 of register Ministry of Regional Development and Public Works
Permit № ПОССП-14 on 15.09.2016 , issued by Ministry of Regional Development and Public Works



Reinforcing ribbed steel - class B 500 C



Nominal dimension, №: 8/ 8,5/9/9,5/10/11/ 12/ 14/16/ 18/ 20/ 22/ 25/ 28/ 32/ 36/ 40

Mechanical properties:

Yield strength (R_e) – **min. 500 MPa**

Tensile strength (R_m) – **min. 575 Mpa**

Percentage total elongation at maximum force (A_{gt})- **min. 7, 5%**

$R_m / R_e \geq 1,15, \geq 1,35$

Chemical composition of the product:

C %	P %	S %	N %	Cu %
max 0,24	max 0,055	max 0,055	max 0,014	max 0,85

Place: Sofia

Date: 28/12/2016

Director of "Conformity Assessment" Dept.

/T. Lyubenova/

